

RNAV (GNSS, VOR/DME) OVERLAY
STANDARD DEPARTURE CHART
INSTRUMENT (SID) - ICAO

TRANSITION ALT 5000

TWR	124.205
ATIS	118.505
	129.055

KAUNAS	RWY 26
AKUMA 1B, ELEKA 1B, ELEKA 1C,	
KAZLA 1B, KAZLA 1D, UGNIS 1B	

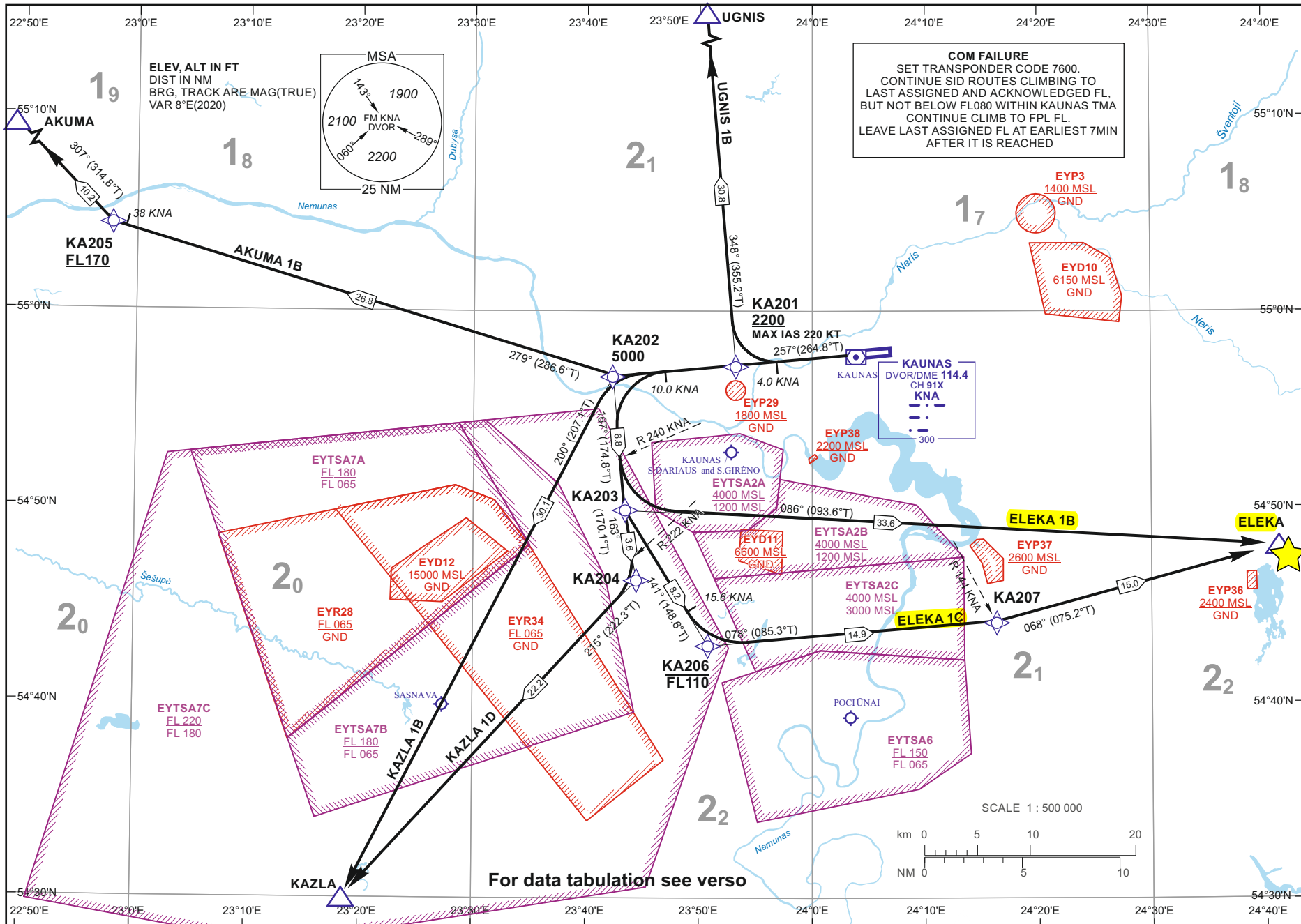
COM FAILURE
SET TRANSPONDER CODE 7600.
CONTINUE SID ROUTES CLIMBING TO
LAST ASSIGNED AND ACKNOWLEDGED FL,
BUT NOT BELOW FL080 WITHIN KAUNAS TMA
CONTINUE CLIMB TO FPL FL.
LEAVE LAST ASSIGNED FL AT EARLIEST 7MIN
AFTER IT IS REACHED

KAUNAS
DVR/DME 114.4
CH 91X
KNA
300

SCALE 1 : 500 000

km	0	5	10	20
NM	0	5	10	

For data tabulation see verso



Changes: EYP36, EYP37 and EYP38 added.

24 FEB 2022

©2019 ORO NAVIGACIJA

AIRAC AMDT 001/2022

KAUNAS

RNAV (GNSS, VOR/DME) OVERLAY

SID RWY 26

TABULAR DESCRIPTION

STANDARD INSTRUMENT DEPARTURE (SID) ROUTES

SID NAME	ROUTE
AKUMA 1B	Climb on course 257° to KNA DME 10.0 NM, then turn right on track 279°. At KNA DME 38 NM (at FL 170 or above), turn right on track 307° and proceed to AKUMA.
ELEKA 1B	Climb on course 257° to KNA DME 10.0 NM, then turn left on track 167°. Cross R-240 KNA, turn left on track 086° and proceed to ELEKA.
ELEKA 1C	Climb on course 257° to KNA DME 10.0 NM, then turn left on track 167°. Cross R-240 KNA, turn left on track 141°. At KNA DME 15.6 NM (at FL 110 or below*) turn left on track 078°. Cross R-144 KNA, turn left on track 068° and proceed to ELEKA.
KAZLA 1B	Climb on course 257° to KNA DME 10.0 NM, then turn left on track 200° and proceed to KAZLA.
KAZLA 1D	Climb on course 257° to KNA DME 10.0 NM, then turn left on track 167°. Cross R-240 KNA, turn left on track 163°. Cross R-222 KNA, turn right on track 215° and proceed to KAZLA.
UGNIS 1B	Climb on course 257° to KNA DME 4.0 NM, then turn right on track 348° and proceed to UGNIS.

RNAV SID WAY POINT CODING (All segments from KA201/KA202 – TF legs)

SID NAME	ROUTE
AKUMA 1B	KA202[A5000+] - KA205[F170+] - AKUMA
ELEKA 1B	KA202[A5000+] - KA203 - ELEKA
ELEKA 1C	KA202[A5000+] - KA203 - KA206[F110 - *] - KA207 - ELEKA
KAZLA 1B	KA202[A5000+] - KAZLA
KAZLA 1D	KA202[A5000+] - KA203 - KA204 - KAZLA
UGNIS 1B	KA201[A2200+; K220-] - UGNIS

Remark: 1. After take-off climb to 4000 FT MSL. Unless otherwise specified by ATC.

2. Aircraft proceeding on SID shall use PDG 6.6% (400 FT/NM) up to 4000 FT MSL.

Aircraft unable to conform with this procedure shall inform ATC accordingly.

Note: *Unless otherwise instructed by ATC

WAYPOINT COORDINATES		
FIX/POINTS	COORDINATES	RADIAL/DISTANCE
KA201	54 57 14.2N 023 53 11.9E	KNA R259.0/D6.2
KA202	54 56 40.1N 023 42 17.7E	KNA R258.2/D12.5
KA203	54 49 54.8N 023 43 21.9E	KNA R229.6/D14.2
KA204	54 46 21.6N 023 44 26.5E	KNA R217.6/D16.0
KA205	55 04 26.0N 022 57 46.9E	KNA R273.1/D38.7
KA206	54 42 54.7N 023 50 45.6E	KNA R200.0/D16.6
KA207	54 44 10.1N 024 16 21.4E	KNA R144.4/D15.3
AKUMA	55 11 37.8N 022 45 10.6E	KNA R280.2/D47.4
ELEKA	54 48 01.6N 024 41 20.1E	KNA R106.2/D23.6
KAZLA	54 29 59.3N 023 18 33.8E	KNA R216.3/D38.2
UGNIS	55 27 50.9N 023 48 44.5E	KNA R336.5/D31.5
KNA	54 57 37.4N 024 03 59.1E	

FOR DETAILED FLIGHT PROCEDURES REFER TO AIP EYKA AD 2.22

Changes: description of SID UGNIS 1B.